

SHREEVANI

CHEMBUR

A BESPOKE BOUTIQUE RESIDENCE

NOT JUST ANOTHER ADDRESS.
A THOUGHTFULLY
DESIGNED EXPERIENCE.

— ● —

In the heart of Chembur rises a rare kind of luxury.
One that doesn't shout to be seen, but whispers class
in every inch.

Welcome to Sheevani - a boutique collection of
2, 3 & 4 BHK residences crafted for those who value
space, design, and distinction.



Stock image

WHEN THE SUN SETS,
THE LANDMARK GLOWS.

SHREEVANI CHEMBUR

As evening sets in, Shreevani's LED-lit atrium and signature 5-storey podium curve create a striking silhouette an architectural landmark that stands tall in the Chembur skyline, day or night.



LUXURY AT NEW HEIGHTS

From the top, Shreevani's rooftop lounge is a stunning blend of design, serenity, and elevated living.



Elegantly crafted rooftop terrace

Artist's impression

WHERE THE SKYLINE MEETS SERENITY.

Shreevani's rooftop is a serene escape above Chembur perfect for sunrise coffees, sundown chats, and starlit gatherings.



Thoughtfully designed common areas

Artists impression

BOUTIQUE HOMES. BESPOKE PLANS.

*Sheevani's residences are larger, smarter,
and more personalized.*



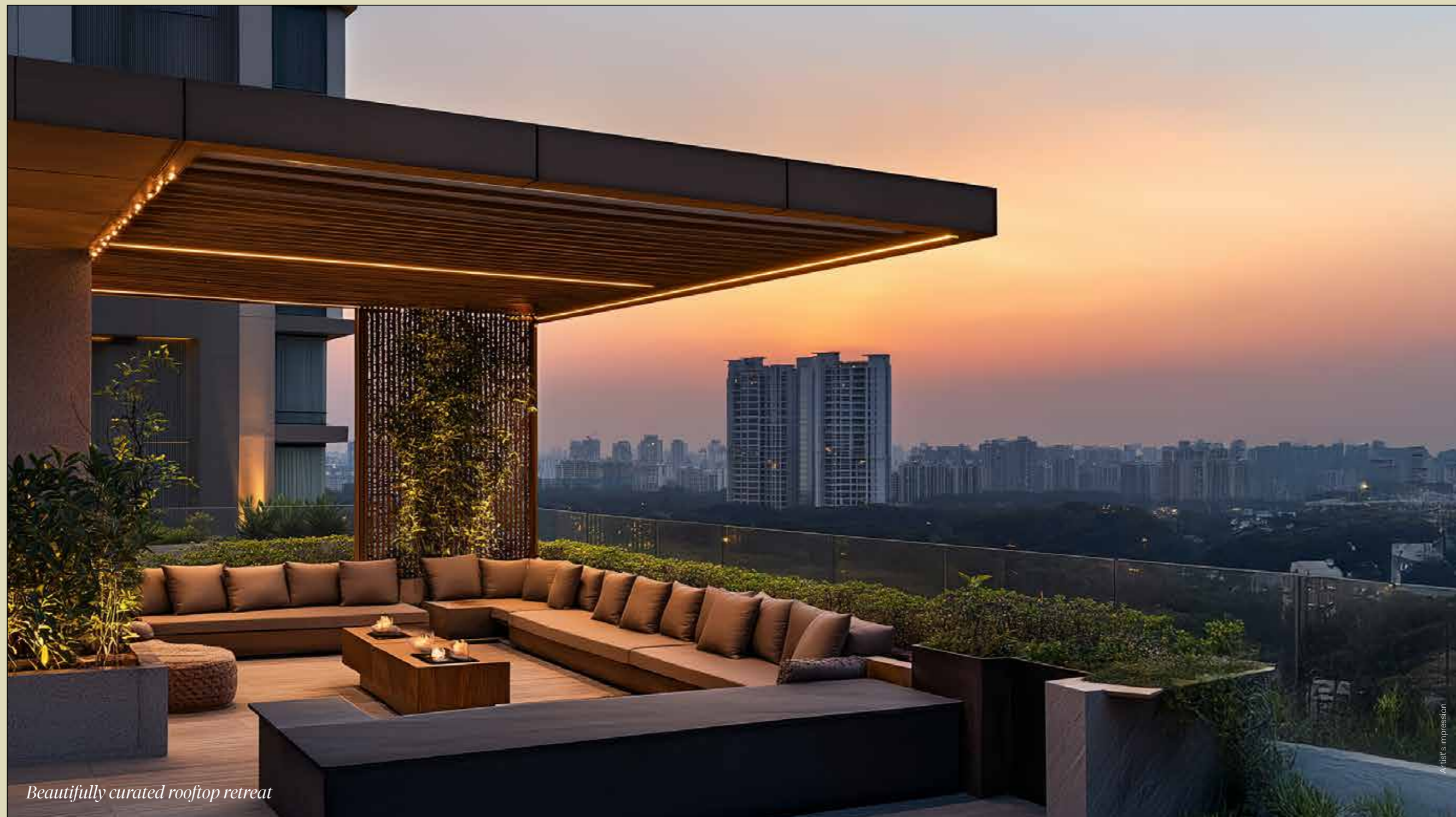
Gracefully crafted living space



Beautifully designed bedroom haven

ABOVE THE CITY, BEYOND THE ORDINARY

Shreevani's rooftop lounge is more than a view — it's a luxurious retreat crafted above the city skyline.

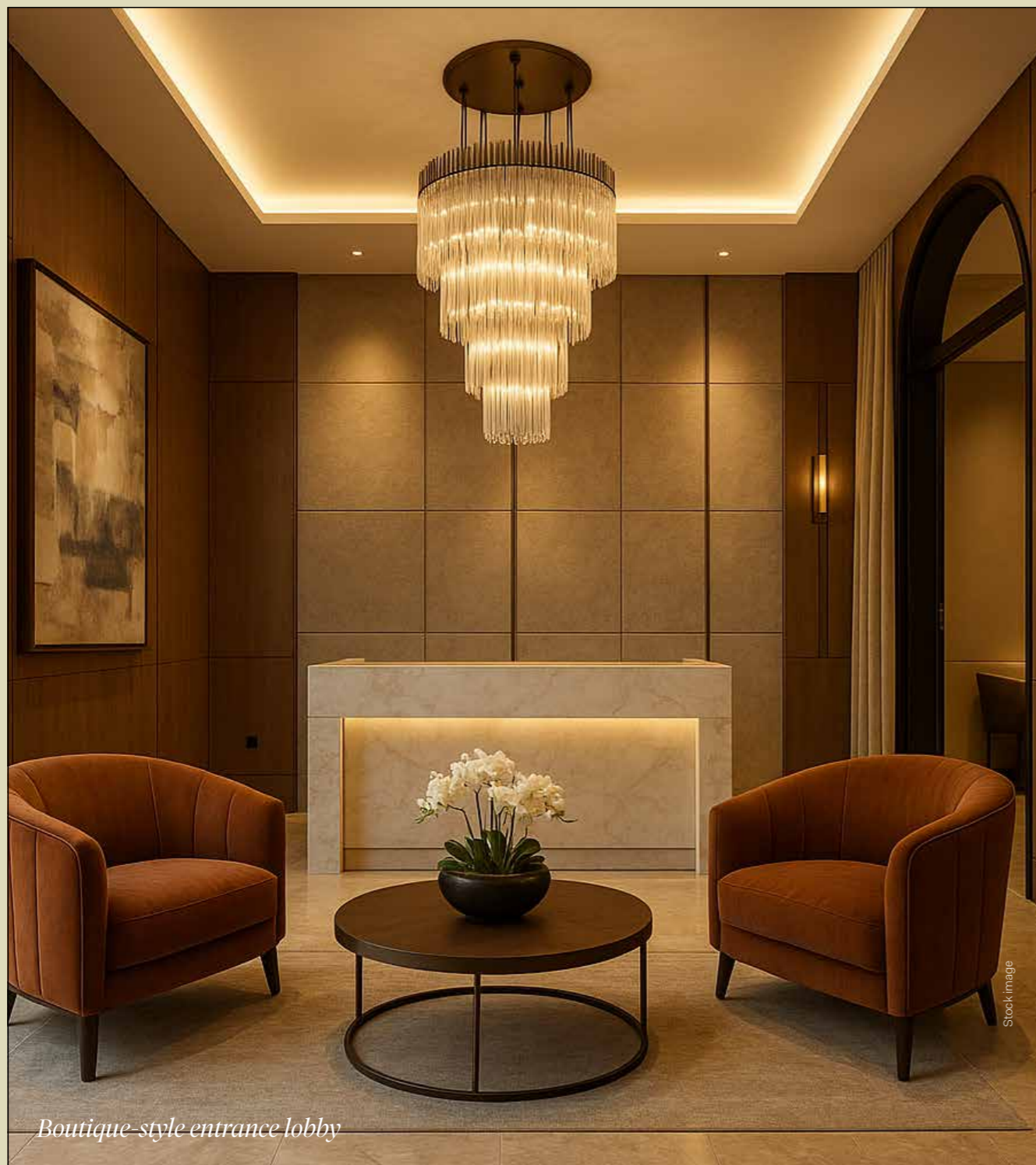


Beautifully curated rooftop retreat

Artist's impression

LUXURY IN THE DETAILS.

Sheevani offers carefully curated features
that uplift your lifestyle:



Boutique-style entrance lobby

Stock image



Smart security & access control

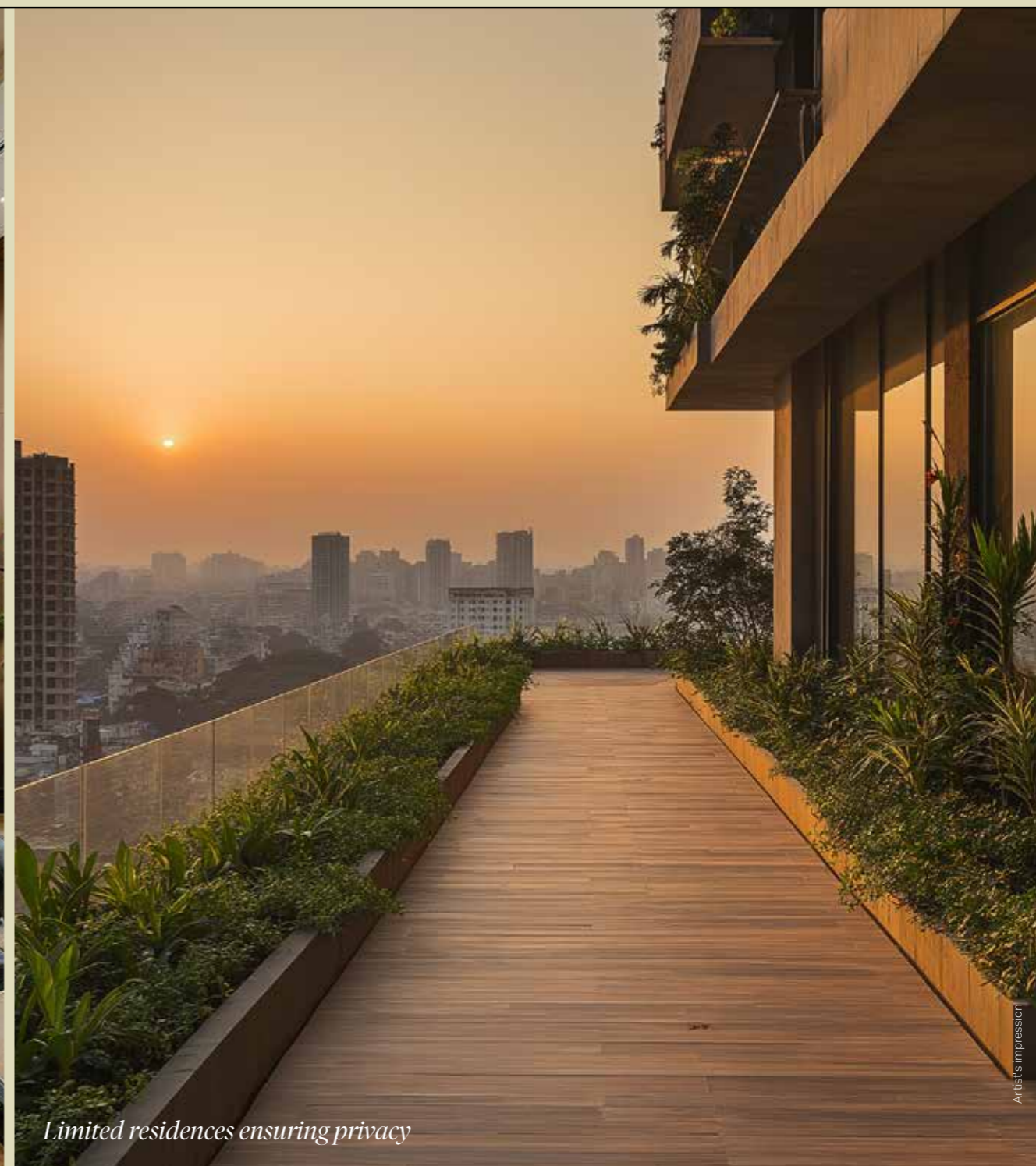
Stock image

ELEGANCE IN EVERY ELEMENT

Shreevani's spaces go beyond design they're crafted for balance, wellness, and refined everyday living.



A luxe, well-curated fitness zone



Limited residences ensuring privacy

Artist's impression



DECADES OF EXCELLENCE,
BUILT INTO SHREEVANI



Built by SKG, known for premium developments across
Chembur, Sheevani reflects decades of trust, refined
taste, and attention to detail.
When a developer's name is synonymous with quality, it
shows in every square foot.

CHEMBUR'S FINEST CORNER.



Centrally positioned. Seamlessly connected.

Sheevani is located at the confluence of convenience
and calm.

With Eastern Freeway, SCLR, Monorail, and upcoming
Metro routes in proximity, every destination is within
effortless reach.

And yet, the locale maintains a serene neighbourhood
charm that elevates everyday living.



Stock image



Stock image



Stock image

LOCATION MAP



SHREE VANI
CHEMBUR
BOUTIQUE RESIDENCES 2, 3 & 4 BHK



A Project by SKG Developers

Site Address: Shree Vani CHS, Plot No. 378, 3V3X+VQ4, Chembur, Mumbai, Maharashtra 400071

Corporate Office: Shree Krishna Group, Sethna Manor, 6th Road, Chembur, Mumbai – 400071

Call: 98339 94155 | 91673 88999 | **Email:** sales@shreekrishnagroup.com

Disclaimer: The images and details in this brochure are indicative and the owner reserves the right to change any or all of these, subject to approval from relevant bodies. The sale of properties in this project is subject and governed by the T&C's of agreement of sale